

#### Media Contacts

**Anne Brown**

410-274-9907

abrown@artbma.org

**Sarah Pedroni**

410-428-4668

spedroni@artbma.org

## Advance Exhibition Schedule

### Fall 2025 – Winter/Spring 2026

This schedule is current as of December 2025 and is subject to change. Please discard earlier versions and verify all information with BMA Communications before publishing. \* Indicates working title or date

#### Upcoming Exhibitions & Installations

##### **John Akomfrah: The Hour Of The Dog**

November 16, 2025 – February 1, 2026

##### **Fratino and Matisse: To See This Light Again**

March 11 – September 6, 2026

##### **Matisse and Martinique: Portraits and Poetry**

March 18 – October 25, 2026

##### **Matisse in Venice: The Stations of the Cross**

March 29 – June 28, 2026

##### **The City Seen: The Collection of Sigmund M. and Mary B. Hyman**

May 10 – September 13, 2026

#### Current Exhibitions & Installations

##### **Heavy with History: Devin Allen and the Baltimore Uprising**

April 16 – November 30, 2025

##### **Deconstructing Nature: Environmental Transformation in the Lucas Collection**

August 27, 2025 – January 18, 2026

##### **Engaging the Elements: Poetry in Nature**

September 17, 2025 – February 8, 2026

##### **Air Quality: The Influence of Smog on European Modernism**

February 9, 2025 – February 22, 2026

##### **The Way of Nature: Art from Japan, China, and Korea**

September 21, 2025 – March 1, 2026

##### **Amy Sherald: American Sublime**

November 2, 2025 – April 5, 2026

##### **Raúl de Nieves: and imagine you are here**

November 19, 2023 – December 2026

##### **Spencer Finch: Moon Dust**

Ongoing

## Upcoming Exhibitions & Installations



John Akomfrah. Detail of untitled work. 2025. © Smoking Dogs Films, Courtesy Lisson Gallery.

### John Akomfrah: *The Hour Of The Dog*

November 16, 2025 – February 1, 2026

The BMA and the Menil Collection in Houston have co-commissioned a major new work by Sir John Akomfrah, a pioneering, London-based filmmaker and artist. This 50-minute, six-channel video installation brings together multiple perspectives of young activists during the U.S. Civil Rights Movement in the 1960s to raise issues relating to memory and social change. Akomfrah constructs a conversation between past and present by creating a montage of archival footage, still photography, and newly filmed materials overlaid with an immersive sound design. Celebrating the rich history of the Civil Rights era, accompanying interpretation and programs will highlight forgotten or unheard accounts of activists and campaigns in the Baltimore region, unearthing the global legacies of local actions.

**Organization:** Curated by Cecilia Wichmann, BMA Curator and Department Head of Contemporary Art, and Michelle White, the Menil Collection Senior Curator, with Oscar Flores-Montero, BMA Curatorial Assistant of Contemporary Art.

**Tour:** The exhibition will be presented at the Menil Collection in 2026.

**Sponsors:** Major support for this exhibition has been generously provided by Nancy Dorman and Stanley Mazaroff and the Suzanne F. Cohen Exhibition Fund. Free admission to this exhibition is provided by Nancy Dorman and Stanley Mazaroff.



Louis Fratino. *Ochre Alessandro*. 2023. Private Collection © Louis Fratino

Henri Matisse. *The Blue Eyes*. 1935. Baltimore Museum of Art. The Cone Collection, formed by Dr. Claribel Cone and Miss Etta Cone of Baltimore, Maryland. BMA 1950.259 © Succession H. Matisse, Paris/Artists Rights Society (ARS) New York

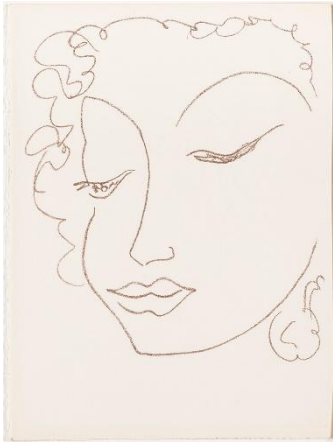
### Fratino and Matisse: *To See This Light Again*

March 11–September 6, 2026

*Fratino and Matisse: To See This Light Again* is a dynamic, intergenerational dialogue that brings together approximately 30 paintings and works on paper by Henri Matisse (French, 1869-1954) and Louis Fratino (b. 1993), a celebrated painter reshaping the language of figuration today. Fratino was born in Annapolis, Maryland, and was educated at the Maryland Institute College of Art in Baltimore, where he became familiar with the strengths and depths of the BMA's Matisse collection. He was influenced by the French artist and others to focus his work on domestic spaces and intimate portraits. Through luminous figure studies, interiors, still-lives, and self-portraits, the exhibition juxtaposes his depictions of the male figure with Matisse's portrayals of female models while highlighting the individuality of each artist's point of view. The exhibition also features several new paintings by Fratino created especially for this presentation.

**Organization:** The exhibition is co-curated by Virginia Anderson, Senior Curator of American Art and Department Head, American Painting & Sculpture and Decorative Arts, and Katy Rothkopf, the Anne and Ben Cone Memorial Director of the Ruth R. Marder Center for Matisse Studies and Senior Curator of European Painting and Sculpture.

**Sponsor:** The exhibition is supported by The Pierre & Tana Matisse Foundation and Nancy Dorman and Stanley Mazaroff.



Henri Matisse. *Poésies Antillaises*. (detail). 1954, published 1972. Baltimore Museum of Art, Purchase with exchange funds from Garrett Collection, BMA 1987.11

## Matisse and Martinique: Portraits and Poetry

March 18–October 25, 2026

This focus exhibition of 20 works is primarily drawn from 28 lithographs Matisse created for the book *Poésies Antillaises* (*Antillean Poetry*) (1946 to 1953) by John-Antoine Nau (born Eugène Léon Édouard Torquet, 1860–1918). It was published posthumously in 1972 and remains one of the artist's least-known illustrated books. The images were inspired by the artist's visit to Martinique in 1930 and comprise a visual representation of Nau's poems, which address female companions who inspire reveries of travel, music, and oceanic landscapes. The exhibition presents these portrayals alongside works by Serge Hélénon and Germaine Casse, two of the period's leading artists from Martinique and Guadeloupe, illuminating some of the transatlantic artistic circles that contributed to the development of early modern art.

**Organization:** This exhibition is guest-curated by Dr. Denise Murrell, Merryl H. and James S. Tisch Curator at Large, Office of the Director, The Metropolitan Museum of Art, and Inaugural Guest Fellow of the Ruth R. Marder Center for Matisse Studies at the BMA (2022–2025).

**Sponsor:** The exhibition is supported by Nancy Dorman and Stanley Mazaroff.



Lucien Hervé. *Le grand atelier au Régina*. 26 juin 1949. (Henri Matisse drawing with bamboo pole tipped with charcoal in his studio at the Regina in Nice, France, June 26, 1949)

## Matisse in Vence: The Stations of the Cross

March 29–June 28, 2026

Co-organized by the Musée Matisse in Nice and the BMA, this exhibition is the first thorough consideration of the powerful mural Matisse created for The Chapelle du Rosaire (Chapel of the Rosary) (1947-1951), the artist's only large-scale architectural project and a highlight of his late career. Matisse designed every detail of the building—from its remarkable stained-glass windows to the priest's vestments and three large-scale black-and-white ceramic murals. The final mural depicts the 14 stations of the cross, which represents Christ's journey to Calvary. It is unique among Matisse's works for its "rough" style, narrative storytelling, and Christian iconography. Matisse created an extraordinary number of drawings for The Stations of the Cross and yet, until now, it remains his least studied work. *Matisse in Vence* features approximately 85 sketches and preparatory drawings of the mural, including many works that have never been shown publicly. The exhibition is also accompanied by a comprehensive catalog published in both English and French.

**Organization:** *Matisse in Vence: The Stations of the Cross* is co-organized by the Musée Matisse Nice and the Baltimore Museum of Art and guest curated by the distinguished scholar Yve-Alain Bois, Professor Emeritus, Institute for Advanced Study in Princeton, New Jersey, with assistance from Alix Agret, art historian and researcher. The BMA presentation is supported by Katy Rothkopf, the Anne and Ben Cone Memorial Director of the Ruth R. Marder Center for Matisse Studies and Senior Curator of European Painting and Sculpture.

**Tour:** The exhibition is on view at Musée Matisse Nice from October 1, 2025, through January 19, 2026 (as *Henri Matisse. The Stations of the Cross—Drawing the Passion*).

**Sponsors:** The Baltimore presentation is supported by Nancy Dorman and Stanley Mazaroff, The Pierre & Tana Matisse Foundation, and the Estate of Carolyn Lee Smith.



Marguerite Thompson Zorach. *Provincetown*. 1916. Baltimore Museum of Art, Sigmund M. and Mary B. Hyman Collection. BMA 2025.170

## The Collection of Sigmund M. and Mary B. Hyman

May 10 – September 13, 2026

This exhibition features a selection of approximately 100 works from the collection of Baltimore philanthropists Sigmund and Mary Hyman. Built from the 1960s to the 2020s, the collection centers on the work of American modernist artists, especially the Ashcan School. The exhibition is organized according to themes that were important to these artists, including urban infrastructure and architecture, life in the city, interiors and still lifes, the figure, as well as a group of works depicting artists, collectors, and performers. Among the highlights are more than 20 works by John Sloan, a newspaper illustrator whose skill with composition enabled him to depict urban subjects with a sharp eye for social critique. Other works of note are *Midtown Looking Down Fifth Avenue* (mid-20th-century), a large-scale Impressionist streetscape by Guy Wiggins; John Singer Sargent's charcoal portrait of *Miss Enid Head Morse* (1911); and *Provincetown* (1916), an outstanding Cubist painting by Marguerite Zorach that encompasses the town's Universalist Meeting House and harbor in a prismatic sweep of color. In total, the show will include 32 paintings, 38 drawings, 33 prints, two sculptures, and one textile.

## Current Exhibitions & Installations



November 2024 – January 2026

Throughout its 110th anniversary, the BMA is presenting a series of exhibitions and public programs that explore the relationships between art and the environment across time and geography. *Turn Again to the Earth*, which takes its title from the writing of environmental activist Rachel Carson, also encompasses a new sustainability plan for the museum and an eco-challenge led by the BMA that invites other cultural and civic organizations to engage in

conversations about the environment and enact their own plans for a more sustainable future.

**Sponsors:** Turn Again to the Earth is generously supported by the Cohen Opportunity Fund, the Henry Luce Foundation, Nancy Dorman and Stanley Mazaroff, Baltimore Gas and Electric, Johns Hopkins University & Medicine, the Eileen Harris Norton Foundation, CareFirst BlueCross BlueShield, and the Clayton Baker Trust.



Courtesy the artist and Galerie Myrtis. © Devin Allen

## Heavy with History: Devin Allen and the Baltimore Uprising

April 16 – November 30, 2025

This focus exhibition of 35 rarely shown photographs by Baltimore-based artist Devin Allen documents a defining moment in the city's history. Allen captured the raw emotion of the uprisings that followed Freddie Gray's untimely death in 2015 and his powerful black-and-white images reveal both the pain and strength of people in Baltimore. A soundscape featuring voices of the Baltimore uprisings is also accessible to visitors while they are in the gallery.

**Organization:** Organized by Lisa Snowden, Editor-in-Chief and co-founder of *Baltimore Beat*, with support from Tracey Beale, BMA Director of Public Programs.





Jean-François Millet. *The Gleaners*. c. 1855. Baltimore Museum of Art, The George A. Lucas Collection, purchased with funds from the State of Maryland, Laurence and Stella Bendann Fund, and contributions from individuals, foundations, and corporations throughout the Baltimore community. BMA 1996.48.18686

## Deconstructing Nature: Environmental Transformation in the Lucas Collection

August 27, 2025 – January 18, 2026



This exhibition of more than 50 19th-century works on paper investigates how European and American artists both documented and contributed to the transformation of the environment into an industrial resource to be hoarded or shared. Drawn from the BMA's George A. Lucas Collection, the exhibition foregrounds the ecological issues at stake in these works and opens up new ways of understanding extractive relationships among people, including imperialism and capitalism. The exhibition is organized thematically, focusing on five specific environments and the ways artists explored them in their work: The Desert, The Forest, The Field, The City, and The Studio. Born and raised in Baltimore, George A. Lucas (1824-1909) spent most of his adult life immersed in the Parisian art world and amassed a personal collection of nearly 20,000 works of art, primarily works on paper by French artists.

**Organization:** Co-curated by Joanna Karlgaard, BMA Assistant Curator of Prints, Drawings, and Photographs and Robin Owen Joyce, BMA Assistant Curator of Academic Engagement

**Sponsors:** This exhibition is supported by the Nancy Dorman and Stanley Mazaroff Fund of the Baltimore Community Foundation. The audio guide is made possible with support from the Getty Foundation through The Paper Project initiative.



Larry Schwarm. *Wheat Stubble Fire*, Eastern Colorado, 1992, printed 2004. Baltimore Museum of Art: Gift of Nancy and Tom O'Neil, Baltimore. BMA 2013.348

## Engaging the Elements: Poetry in Nature

September 17, 2025 – February 8, 2026



This focus exhibition looks at how artists use nature both as inspiration and as a material to spark conversations about caring for the environment. Approximately 20 photographs, prints, drawings, and textiles demonstrate changing views of nature—from the industrial boom of the 1800s to the climate challenges we face today. Artworks illustrate a dwindling sea, dramatic storm clouds, fiery landscapes, and other elemental phenomena that remind us of our deep-rooted connection to Earth.

**Organization:** Curated by Leslie Cozzi, BMA Curator and Department Head of Prints, Drawings, and Photographs, and Andaleeb Badiie Banta, former BMA Senior Curator of Prints, Drawings, and Photographs.

**Sponsor:** This exhibition is supported by the Henry Luce Foundation.



Claude Monet. *Waterloo Bridge, Sunlight Effect with Smoke*. 1903. Baltimore Museum of Art: The Helen and Abram Eisenberg Collection. BMA 1976.38

## Air Quality: The Influence of Smog on European Modernism

February 9, 2025 – February 22, 2026



This focus exhibition of nine works explores the relationship between burning fossil fuels—namely, coal—and the emergence of European modernism. Drawing on research conducted by climate scientists and art historians, the exhibition presents a range of paintings and works on paper by Henri Matisse, Claude Monet, James McNeill Whistler, and others to explore the ways that their artistic practices and style emerged, in part, in response to widespread pollution in London and Paris.

**Organization:** Curated by Kevin Tervala, BMA Eddie C. and C. Sylvia Brown Chief Curator



Tsukioka Kogyo. *Chrysanthemums beside a Stream*. 1900-1910. Baltimore Museum of Art: Straton Family Fund. BMA 2014.50

## The Way of Nature: Art from Japan, China, and Korea

September 21, 2025 – March 1, 2026



For centuries, East Asian cultures have considered human life as part of a much larger system that encompasses the natural world. More than 40 artworks from Japan, China, and Korea demonstrate a way of living where mountains and seas, animals—both wild and supernatural—and plant life and insects are symbolically meaningful and historically pervasive in visual culture. The objects range from delicate 13th-century porcelain to a luminous 18th-century embroidered silk Buddhist *Priest's Robe* and large-scale 20th-century photography. Collectively, these works provide a sense of the impulse to fully experience the natural world, as foundational to our existence, as impacted by human life, and as an enduring metaphor for our survival.

**Organization:** Curated by Frances Klapthor, BMA Associate Curator of Asian Art.

**Sponsors:** This exhibition is supported by the Henry Luce Foundation, E. Rhodes and Leona B. Carpenter Foundation, and Mark Edelson.



Amy Sherard. *Miss Everything (Unsuppressed Deliverance)*. 2014. Private Collection. © Amy Sherard. Photo by Joseph Hyde, courtesy the artist and Hauser & Wirth

## Amy Sherard: American Sublime

November 2, 2025 – April 5, 2026

This acclaimed mid-career retrospective is the most comprehensive presentation of Sherard's work to date, illuminating the arc of her career from 2007 to the present through approximately 40 paintings—from early, rarely seen works to iconic, larger-than-life portraits of Black Americans in everyday moments. Highlights include the portrait of former First Lady Michelle Obama, the memorial portrait of Breonna Taylor, Sherard's award-winning painting *Miss Everything (Unsuppressed Deliverance)*, the triptych *Ecclesia (The Meeting of Inheritance and Horizons)*, and *Trans Forming Liberty*, among other works. The exhibition's presentation in Baltimore is especially meaningful as the artist has deep ties to the city as a former resident and an alumna of the Maryland Institute College of Art. Sherard also has a longstanding relationship with the BMA, which acquired one of her paintings in 2018 and will honor her with one of its "Artist Who Inspires" awards at the 2025 BMA Ball. *Amy Sherard: American Sublime* is accompanied by a fully illustrated catalog published by the San Francisco Museum of Modern Art in association with Yale University Press.

**Organization:** *Amy Sherard: American Sublime* is organized by the San Francisco Museum of Modern Art (SFMOMA) and curated by Sarah Roberts, SFMOMA's former Andrew W. Mellon Curator and Head of Painting and Sculpture. The BMA's presentation is organized by Asma Naeem, Dorothy Wagner Wallis Director, with Cecilia Wichmann, Curator and Department Head of Contemporary Art; Antoinette Roberts, Assistant Curator of Contemporary Art; and Dylan Kaleikaumaka Hill, Meyerhoff-Becker Curatorial Fellow.

**Sponsors:** Major support for *Amy Sherard: American Sublime* is provided by the Ford Foundation, the Terra Foundation for American Art, and Hauser & Wirth. Additional support provided by David Imre and Tom Crusse, Robert Meyerhoff and Rheda Becker, Amy Elias and Richard Pearlstone/The Pearlstone Family Fund, Amy and Marc Meadows, The Aaron Straus and Lillie Straus Foundation, Joanne Gold and Andrew Stern, John Meyerhoff, M.D. and Lenel Srochi Meyerhoff, Frederick Singley Koontz, Pat Lasher and Richard Jacobs and George Petrocheilos and Diamantis Xylas.

**Tour:** The exhibition premiered at SFMOMA in fall 2024 and traveled to the Whitney Museum of American Art in spring 2025.



*Raúl de Nieves: and imagine you are here* installation at the Baltimore Museum of Art, November 2023. Courtesy of the artist and Company Gallery, New York. Photo by Mitro Hood

## Raúl de Nieves: and imagine you are here

**November 19, 2023 – December 2026**

Multimedia artist, performer, and musician Raúl de Nieves's joyful, interactive installations investigate notions of beauty and transformation. For the BMA's Robert E. Meyerhoff and Rheda Becker Biennial Commission, he created a new work that engages with ideas of metamorphosis in the natural world. The centerpiece is a 27-pane faux stained-glass window that evokes the migratory patterns of Monarch butterflies across the United States and Mexico, a Crested Caracara falcon who came to the artist in a dream, and cicadas, among other symbolic imagery that reflects wild transformation. The installation also includes a multi-tiered chandelier and opulently decorated figurative sculptures placed for direct visitor interaction. Together, these vibrant works immerse audiences in de Nieves' distinctive visual language, which draws on Mexican craft traditions, costumes and adornment, religious iconography, mythology, and folktales.

**Organization:** Curated by Leila Grothe, BMA Associate Curator of Contemporary Art.

**Sponsor:** This exhibition is sponsored by the Robert E. Meyerhoff and Rheda Becker Biennial Commission.



Spencer Finch. Installation view of *Moon Dust (Apollo 17)* at the Baltimore Museum of Art. Collection of Joanne Gold and Andrew Stern. © Spencer Finch, Photo by Mitro Hood.

## Spencer Finch: Moon Dust

**Ongoing**

Spencer Finch's impressive light installation *Moon Dust (Apollo 17)*, first presented at the 2009 Venice Biennale, will illuminate the BMA's majestic Fox Court for the next seven years. The work consists of 150 individual chandeliers with 417 lights. The chandeliers are hung individually from the ceiling and form one large, cloud-like structure. Although an abstract sculpture, the installation is also a scientifically precise representation of the chemical composition of moon dust as it was gathered during the Apollo 17 mission. Finch translated the diagrams of the chemical formulas of the contained molecules by using light bulbs in different diameters and basic customary fixtures with different arm lengths to create a three-dimensional scale model of the moon's atomic makeup. The diameter of a globe corresponds to the size of an atom and thus represents a specific element, the small globes representing helium, the bigger oxygen. The overall effect is one of science translated into visual wonderment.

**Organization:** This exhibition is curated by former BMA Senior Curator of Contemporary Art Kristen Hileman.

**Sponsor:** *Moon Dust (Apollo 17)* is on extended loan from the collection of Joanne Gold and Andrew Stern, who are generously sponsoring its presentation at the BMA.

## The Baltimore Museum of Art

Founded in 1914, the Baltimore Museum of Art (BMA) inspires people of all ages and backgrounds through exhibitions, programs, and collections that tell an expansive story of art—challenging long-held narratives and embracing new voices. Our outstanding collection of more than 97,000 objects spans many eras and cultures and includes the world’s largest public holding of works by Henri Matisse; one of the nation’s finest collections of prints, drawings, and photographs; and a rapidly growing number of works by contemporary artists of diverse backgrounds. The museum is also distinguished by a neoclassical building designed by American architect John Russell Pope and two beautifully landscaped gardens featuring an array of modern and contemporary sculpture. The BMA is located three miles north of the Inner Harbor, adjacent to the main campus of Johns Hopkins University, and has a community branch at Lexington Market. General admission is free so that everyone can enjoy the power of art.

## Free Admission

General admission to the BMA is free for everyone—every day! Special exhibitions and programs may be ticketed.

## Hours

The BMA is open Wednesday through Sunday from 10 a.m. to 5 p.m. and Thursdays to 9 p.m. The Sculpture Gardens are open Wednesday through Sunday, 10 a.m. to dusk (weather permitting). The museum and gardens are closed New Year’s Day, Juneteenth, July 4, Thanksgiving Day, and Christmas Day.

## Location

The BMA is located on Art Museum Drive at North Charles and 31st Streets, three miles north of Baltimore’s Inner Harbor, and is accessible by CityLink Silver and LocalLink 51 buses and the Purple Route of the Charm City Circulator. Parking is available on the street, in the BMA lots, and in JHU’s South Garage on Wyman Park Drive.

## Contact Information

General	443-573-1700	Gertrude’s	410-889-3399
BMA Box Office	443-573-1701	Programs & Events	443-573-1832
BMA Shop	443-573-1844	Website	<a href="http://artbma.org">artbma.org</a>